

# NOVACRONO

GIUGIARO  
DESIGN



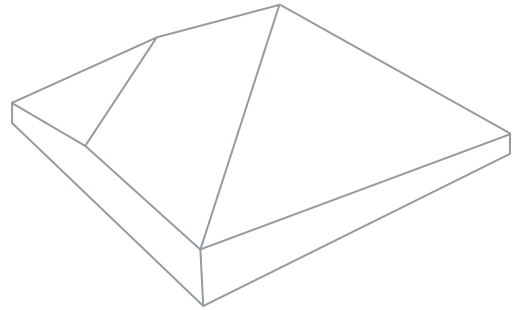
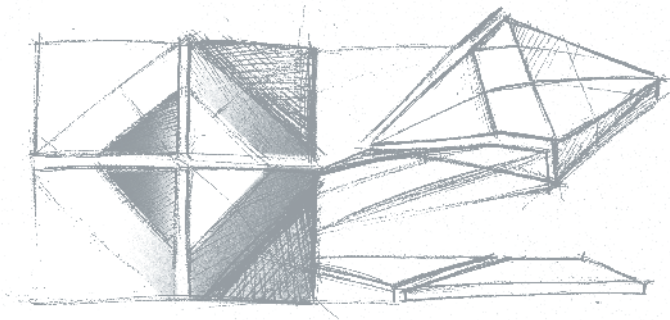
mosaico+





# NOVACRONO

GIUGIARO  
DESIGN  
mosaico+



**energia e piani prospettici, l'intuizione che sorprende**  
energy and perspective planes, intuition is surprising



# NOVACRONO

GIUGIARO  
DESIGN  
mosaico+



Bianco\*



Grigio C.\*



Grigio S.\*



Nero\*



Beige\*



Rosso\*



Azzurro\*



Blu\*

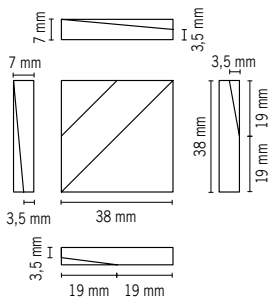


Viola\*

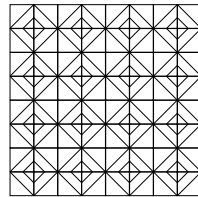


Petrolio\*

\*Layout Nova 1



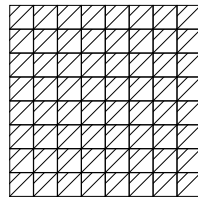
NOVA 1



320x320 mm 12<sup>1/2</sup>x 12<sup>1/2</sup>"

38x38 mm  
1<sup>1/2</sup>x1<sup>1/2</sup>"

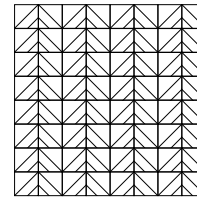
NOVA 2



320x320 mm 12<sup>1/2</sup>x 12<sup>1/2</sup>"

38x38 mm  
1<sup>1/2</sup>x1<sup>1/2</sup>"

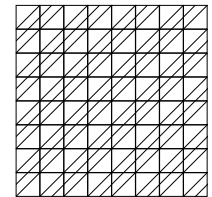
NOVA 3



320x320 mm 12<sup>1/2</sup>x 12<sup>1/2</sup>"

38x38 mm  
1<sup>1/2</sup>x1<sup>1/2</sup>"

NOVA 4



320x320 mm 12<sup>1/2</sup>x 12<sup>1/2</sup>"

38x38 mm  
1<sup>1/2</sup>x1<sup>1/2</sup>"

## CARATTERISTICHE TECNICHE TECHNICAL CHARACTERISTICS

Assorbimento d'acqua Water absorption (UNI EN ISO 10545/3)	Resistenza al gelo Frost resistance (UNI EN ISO 10545/12)	Resistenza agli attacchi chimici Resistance to chemical attacks (UNI EN ISO 10545/13)	Resistenza alle macchie Resistance to staining (UNI EN ISO 10545/14)	Resistenza dei colori alla luce Colours resistance to fading (DIN 51094)	Ricerca di piombo e cadmio Lead and cadmium reserch (UNI EN ISO 10545/15)	Resistenza all'impatto Impact strength (UNI EN ISO 10545/5)	Resistenza all'abrasione profonda Resistance to deep abrasion (UNI EN ISO 10545/6)
nullo / none	resistente / resistant	resistente / resistant	resistente / resistant	resistente / resistant	assente / absent	0,83	165 mm <sup>3</sup>

Intensity of Cohesion of the Ceramic Floor tiles to the Portland Concrete ASTM C482-02	Crazing Resistance ASTM C424-93	Resistance to Frost/Defrost Cycles ASTM C1026-87	Water Absorption ASTM C373-88	Resistance to Abrasion ASTM C1027-99
>50 psi	passes	passes	passes	3

## IMBALLI PACKAGING

Layout	Misure / Tessera mm inches Chip / Size mm inches	Misure / Foglio mm inches Sheet / Size mm inches	Fogli / Scatola Sheets / Box	m <sup>2</sup> Sq ft / Scatola Sqm. Sq ft / Box
<b>Nova 1</b>				
<b>Nova 2</b>				
<b>Nova 3</b>	38x38 mm 1 <sup>1/2</sup> x1 <sup>1/2</sup> "	320x320 mm 12 <sup>1/2</sup> x12 <sup>1/2</sup> "	10	1,02 10,98
<b>Nova 4</b>				

ogni layout può venire realizzato sia in tinta unita (10 colori a disposizione) che a colori miscelati / each layout can be created using both solid colours (10 colours available) and mixed colours

# PULSARCRONO

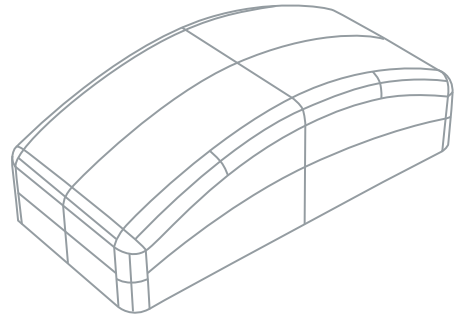
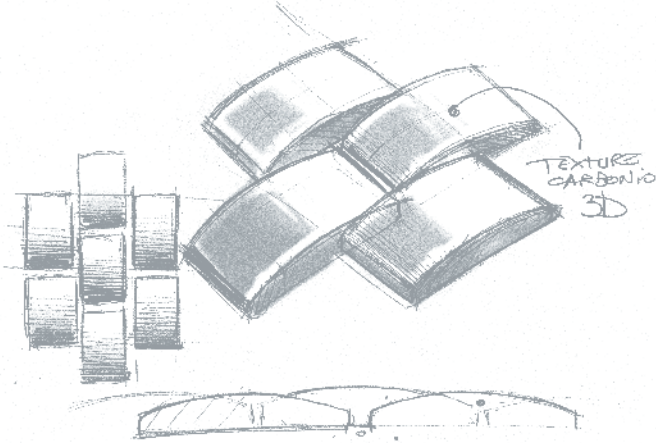
GIUGIARO  
D E S I G N



mosaico+

# PULSARCRONO

GIUGIARO  
DESIGN  
mosaico+



**un impulso, una traiettoria, una raffinata forma filante**  
an impulse, a trajectory, a refined, streamlined shape









# PULSARCRONO

GIUGIARO  
DESIGN  
mosaico+



Bianco\*



Grigio C.\*



Grigio S.\*



Nero\*



Beige\*



Rosso\*



Azzurro\*



Blu\*

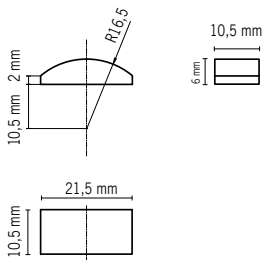


Viola\*

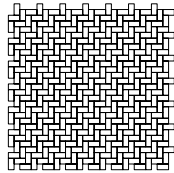


Petrolio\*

\*Layout Pulsar 2



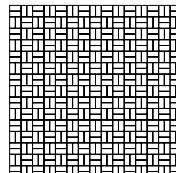
## PULSAR 1



312x312 mm 12<sup>1/4</sup>x 12<sup>1/4</sup>"

□ 21,5x10,5 mm  
7/8x3/8"

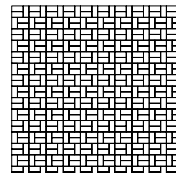
## PULSAR 2



323x323 mm 12<sup>3/4</sup>x 12<sup>3/4</sup>"

□ 21,5x10,5 mm  
7/8x3/8"

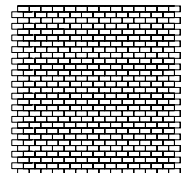
## PULSAR 3



323x323 mm 12<sup>3/4</sup>x 12<sup>3/4</sup>"

□ 21,5x10,5 mm  
7/8x3/8"

## PULSAR 4



316x327 mm 12<sup>1/2</sup>x 12<sup>7/8</sup>"

□ 21,5x10,5 mm  
7/8x3/8"

## CARATTERISTICHE TECNICHE TECHNICAL CHARACTERISTICS

Assorbimento d'acqua Water absorption (UNI EN ISO 10545/3)	Resistenza al gelo Frost resistance (UNI EN ISO 10545/12)	Resistenza agli attacchi chimici Resistance to chemical attacks (UNI EN ISO 10545/13)	Resistenza alle macchie Resistance to staining (UNI EN ISO 10545/14)	Resistenza dei colori alla luce Colours resistance to fading (DIN 51094)	Ricerca di piombo e cadmio Lead and cadmium research (UNI EN ISO 10545/15)	Resistenza all'impatto Impact strength (UNI EN ISO 10545/5)	Resistenza all'abrasione profonda Resistance to deep abrasion (UNI EN ISO 10545/6)
nullo / none	resistente / resistant	resistente / resistant	resistente / resistant	resistente / resistant	assente / absent	0,83	165 mm <sup>3</sup>
Intensity of Cohesion of the Ceramic Floor tiles to the Portland Concrete ASTM C482-02	Crazing Resistance ASTM C424-93	Resistance to Frost/Defrost Cycles ASTM C1026-87	Water Absorption ASTM C373-88	Resistance to Abrasion ASTM C1027-99			
>50 psi	passes	passes	passes	3			

## IMBALLI PACKAGING

Layout	Misure / Tessera mm inches Chip / Size mm inches	Misure / Foglio mm inches Sheet / Size mm inches	Fogli / Scatola Sheets / Box	m <sup>2</sup> Sq ft / Scatola Sqm. Sq ft / Box
Pulsar 1		312x312 mm 12 <sup>1/4</sup> x 12 <sup>1/4</sup> "		0,97 10,44
Pulsar 2	21,5x10,5 mm 7/8x3/8"	323x323 mm 12 <sup>3/4</sup> x 12 <sup>3/4</sup> "	10	1,04 11,19
Pulsar 3		316x327 mm 12 <sup>1/2</sup> x 12 <sup>7/8</sup> "		1,03 11,09

ogni layout può venire realizzato sia in tinta unita (10 colori a disposizione) che a colori miscelati / each layout can be created using both solid colours (10 colours available) and mixed colours